

AUTUMN 2023 Local



news from your borough council

Panto tickets on sale

also inside...

Feedback event
confirmed
page 5

Who's in the
spotlight?
page 15

Theatre
listings
page 22

STARRING EASTENDERS'
RITA SIMONS
AS THE ENCHANTRESS

BEAUTY AND THE BEAST

by Morgan Brind



tunbridgewells.gov.uk



[TWellsCouncil](#)



[TunbridgeWellsBoroughCouncil](#)



[TWellsbc](#)

Best roofing and building company - good rep over 30 years,
Tunbridge Wells, Sevenoaks, Tonbridge, Kent and Sussex



Roofing & Building Ltd

Emergency
roof repairs 24
hour support line
**07555
798736**

- ✓ Roofing
- ✓ Roof repairs
- ✓ Roofline
- ✓ Chimneys
- ✓ Building work
- ✓ Flat roofs
- ✓ Traditional felt
- ✓ GRP fiberglass
- ✓ EPDM Rubber Roofing
- ✓ Chimney repairs
- ✓ UPVC guttering
- ✓ Fascias and soffits



Arkiton offer the best Quality and Service - Price Promise Guarantee -
Arkiton Roofing & Building will beat any like-for-like roofing quote in Tunbridge Wells and throughout Kent



TRUSTATRADE
APPROVED



THE GUILD
of MASTER CRAFTSMEN



CALL
NOW **01892 884540**

Freephone 0800 933 0247
Onsite 07555 798736
Email info@arkiton.co.uk

Dear resident

I'm all for embracing the seasons, but autumn seems to have appeared rather quickly. Having said that, it's been a busy summer, and there's plenty to look forward to still. Hearing colleagues talk about panto and Skate recently; I'm excited for winter already!

Thanks to everyone who completed our Residents' Survey. We're busy analysing the data, and we look forward to sharing the results at the feedback event on 1 November. I hope to meet you there; in the meantime, see details on page 5.

Our What We Do communications campaign kicks off this month. We want to share more with you about the different services in the Council and first up is our Economic Development team. Read about the things they get involved with on page 15.

Phone lines are often busy, and your calls are important to us, but you can do so much online very quickly and easily – why not try online first! Find out more on page 12.

I occasionally give our weekly email a plug; our latest news sent to over 17,000 people and growing each week! – so do sign up if you're online and haven't already.

Lastly, inside we've got a whole array of shows at the Assembly Hall Theatre, news, articles, and events to keep you up to date.

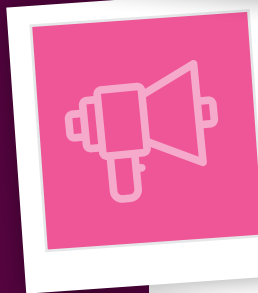
Enjoy!

William Benson
Chief Executive



Contents

- 4 Halloween and Fireworks
- 5 Residents' Survey Feedback
- 6 Section 106 contributions
- 7 News in brief
- 9 Crescent Road toilets
- 10 St John's Park & Meadows Fountain
- 10 Safe spaces
- 11 Advertise with us
- 11 Co-Wheels
- 12 Remembrance Sunday
- 13 Autumn in Tunbridge Wells
- 15 What we do - Economic Development team
- 17 Shared Prosperity Fund
- 18 Some events across the borough
- 19 The Amelia Scott one year on
- 21 Skate
- 22-25 Assembly Hall listings
- 27 No trick or treat poster



We produce Local to keep you up-to-date about Council services and news. If you have any comments about the magazine, we'd love to hear from you. Contact us by:

Email: Local@tunbridgewells.gov.uk Phone: **01892 526121**

Post: **Lizzie Goodwin, Communications Manager,
Tunbridge Wells Borough Council, Town Hall, Royal
Tunbridge Wells, Kent TN1 1RS**

To advertise, contact Space Marketing Ltd on
01892 677741 or email
davidh@spacemarketing.co.uk



Advertising helps to keep our costs down. We do not endorse the products and services advertised in Local.

The information in this publication was correct at the time of going to print. Tunbridge Wells Borough Council cannot accept responsibility for any errors, omissions or subsequent changes.

If you require Local magazine in large print or on audio please phone **01892 526121**.

HALLOWEEN

heaven or hell

Darker evenings are just around the corner and that means Halloween isn't too far behind. There's lots of advice online about how to enjoy this celebration safely if you're planning on trick or treating:

-  Make sure younger children are accompanied by a responsible adult
-  Plan a safe route through well-lit areas
-  A good rule of thumb is only call at houses where there is a pumpkin outside, even better is to agree in advance with friends and neighbours that you'll call on them
-  Be sure to be seen, be visible to others including motorists
-  Know what route older children are following and remind them they should only call at houses where they know trick or treating is welcome
-  Naked flames in pumpkins and dressing-up costumes don't mix, avoid flames altogether
-  Masks can make it difficult to see where you're going, face paints are safer

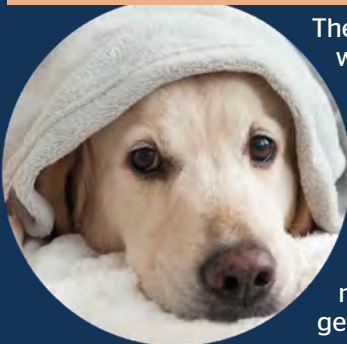
NO THANKS!

Not everyone wants to have trick or treaters calling at their home, for some people it can be a worry to have callers after dark.

On the inside back cover you'll find a sign that you can cut out and place near your door if you or someone you know would rather not have any Halloween callers.



Fireworks can be fun...but

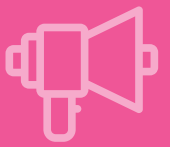
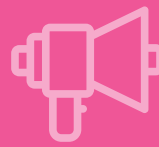
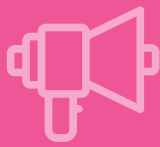


The safest place to enjoy fireworks is at a public display so check local websites for events near you. If you are having fireworks at home follow the Firework Code and make it a safe, fun time for everyone. Find out more about the firework code here: rospa.com

Remember it is an offence to let fireworks off during night hours (11pm to 7am), except on Bonfire Night (midnight), Diwali, New Year's Eve, and Chinese New Year (1am).

Not everyone likes fireworks so please be a considerate neighbour and remember fireworks frighten pets, get information and advice at rspca.org.uk





Residents' Survey Feedback Event

Wednesday 1 November

7pm – 8.30pm • The Amelia Scott

Save the date!

Book your free ticket at
twbc.online/rstickets

Any problems booking a ticket online, email consultations@tunbridgewells.gov.uk or call on 01892 526121.



What did
residents in your
local area think?

How would
residents balance
the budget?

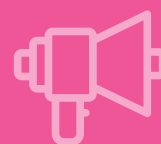
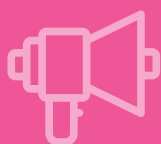
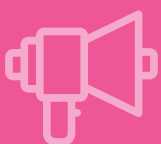
How do
residents travel
around the
borough?

How do
residents rank
the Focus on
Five priorities?

Do residents think
our services are good
value for money?

What are the
most valued
services?

Interested? Come along and meet us.





At least 60% from each ticket sold supports good causes, and there's a chance to win the £25,000 jackpot every week!

Find out more and start supporting today

twlotto.co.uk/good-causes

TWLottoUK TWLottery

Players must be a minimum age of 18.

Developers' contributions go to local communities

Planning applications that are approved by the Council's Planning Committee may have conditions attached to them which require developers to put aside sums of money for investment in the local community. The funds are held by the borough council and can only be used for the purpose listed in the planning approval.

In recent weeks developer contributions of almost £147,000, secured in respect of development at Mascalls Farm, have been released to Paddock Wood Town Council to be used towards football pitch improvements on the Memorial Fields.

The work will be carried out alongside the improvement of the cricket wicket at the Memorial Fields which has also received money from developer contributions.

Another allocation of developer funds was to Brenchley and Matfield Parish Council who received just over £1,700 towards urgent repairs to replace wooden posts at the Burma

Bridge, part of the adventure trail in Brenchley Recreation Ground. This money was secured in relation to the Pear Tree Cottages development.

Contributions from the development at Knights Wood, Tunbridge Wells will be used to reinstate a peak-period bus service between Knights Park and Tonbridge town centre, ensuring residents continue to have access to the service for approximately a further four years.

As we write approval is pending to use contributions from Hawkenbury Fields to undertake a project to extend the car park at Hawkenbury Recreation Ground. This will mean around 15 additional parking spaces including two spaces for Blue Badge holders. The new perimeter of the car park will be planted with a native mixed hedge to separate it from the rest of the park.

On page 10 you can read about a project which used developer contributions to restore the fountain at St John's Park, Tunbridge Wells.

£147,000

to be used towards football pitch improvements on the Memorial Fields, Paddock Wood

£1,700

to replace wooden posts on the adventure trail in Brenchley Recreation Ground

Reinstated a peak-period bus service between Knights Park and Tonbridge town centre

News in brief

Find out what people are talking about in Tunbridge Wells this summer

For news and events follow us on Facebook and Twitter or find out more at [twbc.online/news](https://www.twbc.online/news)



TunbridgeWellsBoroughCouncil



TWellsCouncil



TWellsbc

Freedom of the Borough

To mark the 75th anniversary of the NHS, the Council was delighted to grant the Honorary Freedom of the Borough of Tunbridge Wells to Maidstone and Tunbridge Wells NHS Trust. The Mayor Councillor Hugh Patterson said: 'I was honoured to be able to hand over the commemorative scroll which is a sign of how highly we regard and value the work of our local NHS trust and its employees.'

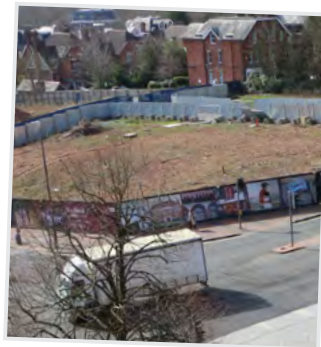
One-way High Street to stay

You may remember that as we were coming out of the pandemic there were various government-backed initiatives to get us back into our local high streets. One of the responses to this in Royal Tunbridge Wells was to implement a trial one-way traffic flow in the High Street and install planters at various points on the road in support of this.

In the consultations carried out before and after implementation, the local businesses and residents affected by the scheme were broadly in favour. The one-way routing has now been made permanent and this means that more can now be done to improve how the road looks - some of the planters have already been adopted by local businesses and we are working with the Business Improvement District to see what further enhancements can be made.

What's happening on the cinema site in Royal Tunbridge Wells?

The owner of the cinema site, Retirement Villages, has indicated that construction work to develop a Thrive Living retirement community is set to start in early 2024.



If you'd like to keep up to date with this project there is a website and a regular newsletter being produced by the developer.

To sign up for updates fill in the form at [tunbridge-wells.retirementvillages.co.uk](https://www.tunbridge-wells.retirementvillages.co.uk) or email community@tunbridgewellsretirementvillage.co.uk

Device Recycling Scheme

Digital Kent (set up by Kent County Council) has launched a Device Recycling Scheme for residents, businesses and other organisations to dispose of unwanted IT equipment and devices, easily, safely, securely and in a way that minimises the impact on the environment.

The scheme aims to refurbish and reuse wherever possible and directly support those in the community, who need access to devices and hardware. [digitalkent.uk](https://www.digitalkent.uk)

Local Authority Housing Fund homes

TWBC is partnering with housing association Town & Country Housing (TCH) on a project to add 15 new homes to local social housing stock.

This follows the award of funds from the Department for Levelling Up, Housing and Communities' £500 million capital fund - the Local Authority Housing Fund (LAHF).

Initially the properties will be used to provide homes for families fleeing conflict via the Ukrainian and Afghan resettlement and relocation schemes. Once there is no further need to house these families the homes will be available, forever, for other households on the Council's housing register.

Working with TCH means that the project will benefit from the specialist experience TCH has in investing in and managing social and affordable housing. TCH will look to purchase suitable properties for this project in locations close to amenities across the borough. At least two suitable properties are already in the pipeline and the Council and TCH hope that all purchases will be complete by March 2024.

HEMSTED
PARK

BENENDEN SCHOOL

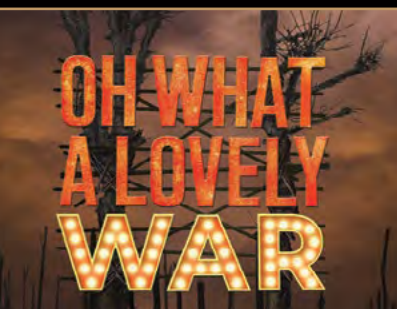
AUTUMN/WINTER 2023

Book now at hemstedpark.com



© Photograph by Jan Versweyveld

A Little Life 30th September



Oh What A Lovely War

7th October



Kidenza

15th October



The Great Think
Pink Show

20th October



Kinder

23rd/24th October



Sleeping Beauty

27th October



Gary Delaney in
Punderland

28th October



A Very Old Man with
Enormous Wings

3rd November



Trio Bohemo

16th November



Angela Hewitt

19th November



Swinging at the Cotton Club

25th November



The Jazz Sapiens

8th December



Christmas with the Len
Phillips Swing Orchestra

15th December



Crescent Road toilets

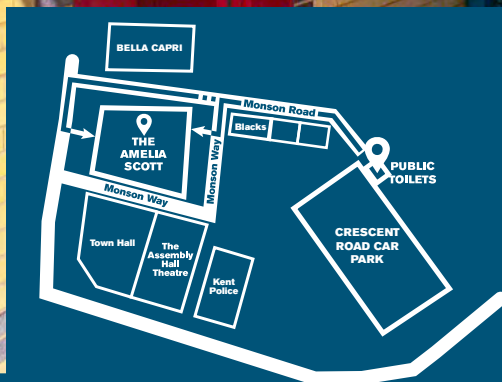
The public toilets at Crescent Road car park, Royal Tunbridge Wells are now closed.

No need to worry though as you'll find alternative facilities just a short walk away in the nearby Amelia Scott.

Closing the toilets means a saving of around **£23,000** a year and because the toilet building is in a very poor state requiring costly maintenance work, we are exploring the possibility of demolishing the building to end the ongoing expense.

We have also reviewed the toilets we are responsible for in Paddock Wood and in Sissinghurst. We're pleased to report that the facilities in Sissinghurst will remain open. They are owned by the parish council who have now taken over the responsibility for them.

Discussions with Paddock Wood Town Council on the future of the toilets in the town are due to take place. Should responsibility for these facilities also be transferred this would mean a further saving for the borough.





THANK YOU!

Get a weekly bin day reminder

Sign up to our weekly newsletter
twbc.online/alerts
 and receive an email which is personalised
 to your address and includes information
 about your bin collections and more!

The Recycling and Waste team thanks you for your support during July when changes were made to the bin collection rounds, which meant new bin days for lots of homes.

The early indications are that the changes have made the rounds more balanced, leading to significant improvements in completing collections on the scheduled day.

Keep flattening your boxes!

Please use your green box for paper and cardboard recycling.

Lots of cardboard boxes? Cardboard boxes too big for the green box?

Please flatten the boxes, stack them inside another box no bigger than your green box, and put out for collection next to your green box and brown wheellie bin.

Find out more about what can go in your bins and green box here twbc.online/mybin



Love Where We Live Awards



There are no Love Where We Live Awards in 2023

Don't worry they haven't gone forever, they will now be every other year. We will launch the 2024 campaign around May, at which time we will be encouraging you to nominate all the local volunteers, charities, groups, and businesses who make a difference in the community. Look out for the promotions next year!

St John's Park & Meadows – The 'Love Fountain'

In last year's summer edition of Local, we featured an article on plans for the restoration of the iconic water fountain in St John's Park & Meadows. The fountain, donated to the borough by Joseph Horatio Love in 1920, was originally crafted in fine, Royal Doulton tiles, the most ornate of which exist in a frieze at its base.

Early on, it was acknowledged that it would be too expensive to restore the structure as a working water fountain. The aim of the project was, therefore, to add a specially-commissioned bowl – or 'tazza', to give it its correct name – and plant it up as a public art project, to create a new, exciting viewpoint.

In June this year, the restored fountain was unveiled by the Mayor Councillor Hugh Patterson, who paid tribute to those who had worked so hard to restore the feature, namely: The Friends of St John's Park and Meadows; the local charity Refresh Tunbridge Wells; the Council's Parks team; local stone-cast specialists Chilstone's; and to McCarthy Stone, the developers of the nearby The Dairy housing complex, whose developer contribution funded the project.



Safe Spaces

If you are experiencing domestic abuse, or someone you know is, it can be isolating and difficult to find support or think about your options. Safe Spaces provide a safe and discreet way to reach out to friends and family and time to contact specialist support services who can help.

The Amelia Scott in Royal Tunbridge Wells has a Safe Space. There is a private room where you can go, just ask a member of staff.

If you need specialist support, Local charity DAVSS is there to help and support people in the borough regardless of your circumstances.

www.davss.org.uk helpline: 01892 570538

UK SAYS
NO MORE
TOGETHER WE CAN END DOMESTIC ABUSE & SEXUAL VIOLENCE

UK SAYS NO MORE is a national campaign to raise awareness to end domestic abuse and sexual violence across the UK. They are working with shops, banks, and other organisations to provide that safe place to go.

Go to their website to find other safe spaces near you
www.uksaysnomore.org/aboutuksaysnomore

Advertise with us

Be seen by 50,000 homes

Are you a sole trader or small business looking for more clients?

Our new listings page could be perfect for you at **£150 plus VAT** per box.

Each box is 45mm x 65mm (see example ad).

Each edition of Local goes to all homes in the borough, that's around 50,000! The next magazine will be distributed in early December so to kick start your new year promotions, contact Space Marketing Ltd to advertise.

01892 677741 or **davidhspacemarketing.co.uk**

£150
plus VAT

Example

Electric|Electrical

Brighten Up Your Day

Call Now 01892 123456

Electrical Repairs | Surge Protection
Lighting Upgrades | Lighting Installation

Co Wheels, the solution to your transport needs?

Have you thought about signing up to the car club?

Co Wheels launched in Tunbridge Wells in 2014 for a one-year pilot with just two vehicles. Now there are eight cars and we're working to get a ninth. It is the fourth best performing car club across the country and has over 500 members. You'll find the Co Wheels cars, either hybrids or small petrol engine vehicles, in their own dedicated parking spaces in convenient locations in and around Royal Tunbridge Wells.

When you're a Co Wheels member you book your car online or over the phone and a smartcard takes care of the need for keys! With your membership you'll have access not just to the cars locally but to over 500 vehicles across the country.

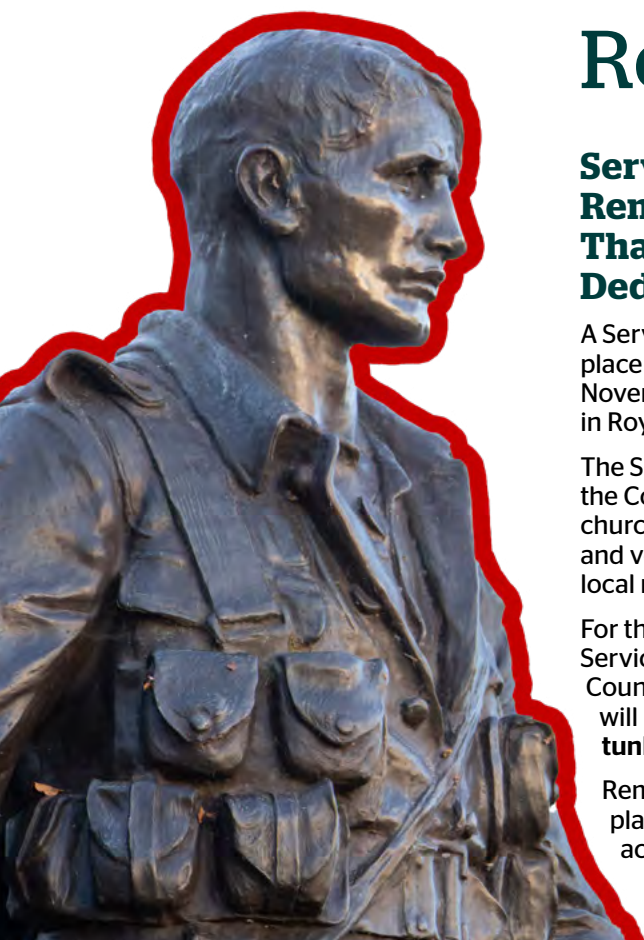
If you were looking for a good reason to join the car club there are plenty to choose from; using a car club vehicle can provide a cost-effective and environmentally friendly way of getting around. You can use a Co Wheels car for just an hour or for days at a time without any of the costs associated with owning a vehicle, so no more worries about insurance, breakdown cover, fuel and maintenance or repair costs.



It's a realistic alternative to car ownership and definitely worth thinking about. Businesses can join Co Wheels too, giving flexible access to vehicles without the cost of ownership.

To join the car club, see a map of where the Tunbridge Wells cars are usually parked, or to find out more about membership visit **co-wheels.org.uk**





Remembrance Sunday

Service of Remembrance, Thanksgiving and Dedication

A Service of Remembrance takes place at 10.45am on Sunday 12 November at the War Memorial in Royal Tunbridge Wells.

The Service is organised by the Council with the support of churches, the Royal British Legion and veterans organisations and local military and cadet forces.

For those unable to attend, the Service will be live-streamed on the Council's YouTube channel. A link will be available at [tunbridgewells.gov.uk](https://www.tunbridgewells.gov.uk)

Remembrance services take place in parishes and towns across the borough, see local websites for details.

Tunbridge Wells Cemetery Civic Event

At 12.30pm the Mayor Councillor Hugh Patterson, will lay wreaths at the four War Memorials in Tunbridge Wells Cemetery, an event which has taken place since the Garden of Remembrance was opened in 1951.

The Mayor will lay the first wreath at the Cross of Sacrifice in the WW2 Garden of Remembrance, followed by wreaths at the Civilian War Memorial, the WW1 Cross of Sacrifice and finally the RAF Memorial.

All are invited to attend the Civic Event - the Garden of Remembrance is located in the cemetery close to the boundary wall with Nevill Golf Club.

Try online first

Your call is important to us and we'll answer you as quickly as we can.

If you're trying to contact us and you'd like to beat the phone queue then going online to [tunbridgewells.gov.uk](https://www.tunbridgewells.gov.uk) is the quickest and easiest way to:

find Council
information

tell us about a
problem

report a change

make a
payment

sign up for
services

Whether it's:



about your
Council Tax



about your
Housing Benefit



to tell us
you're moving



to report a
missed bin collection



to report a
broken bin



to apply for a resident's
parking permit

or another Council service, go online first and beat the queue!

Recycling and refuse enquiries can also be dealt with via webchat

Monday-Friday 9am-4.30pm

Just click the **start chat** icon on our Bins and Recycling webpages

Autumn in Tunbridge Wells

 Visit_TunbridgeWells

 Visit TunbridgeWells

 TwellsTourism

Visit
tunbridgewells

Hops' season

Beer lovers and anyone who'd like to know more about hop growing and the brewing process should be sure to visit **Scotney Castle** and take part in one of their hops' season guided walks. Or, pick up a map from the reception and enjoy the hop trail at your leisure. Marvel at the tall hop vines which hold so much history and family memories of hop picking. Pass by the **Little Scotney Farm**, the only working hop farm in the National Trust and one of the few in Kent.

Next stop in the beer-making process is the nearby **Cellar Head Brewery**, tours take place on the first Saturday of the month. Learn about the brewing process and taste their award-winning beer.

If you'd like to taste our very own Tunbridge Wells beer, be sure to visit the town's **Fonthill Brewery Tap Room and Pig and Porter** (open on select dates). For craft beer and real ale enthusiasts, must-visits include **Fuggles** and newly-opened **Allkins** in Royal Tunbridge Wells as well as **Larkin's Alehouse**, Cranbrook and **The Halfway House**, Brenchley. And of course there is the 12th Real Ale and Cider Festival taking place at the volunteer-run **Spa Valley Railway** from 19-22 October, an annual must visit!

Autumn outdoors

As the season changes the colour palette at **Bedgebury National Pinetum** transforms too into warming shades of orange and red. Whether you are cycling, walking or enjoying a hot drink at the café, Bedgebury offers beautiful views and calm surroundings for a relaxing day out. For families, the **Zog Trail** and **Go Ape** are a fun activity for everyone!

Bedgebury is accessible, there is a wheelchair and an all-terrain Trampler mobility scooter that



Horse riding in Broadwater Warren



Hop vines at Scotney Castle



Winning!

This is the winning picture from the Visit Tunbridge Wells photography competition which we ran in August.

The stunning scene is from the Spa Valley Railway.

Congratulations to Lilly Carreras who took the picture.

can be booked free of charge in advance of your visit. Facilities also include a Changing Places toilet. See website for more information forestryengland.uk/bedgebury

Just outside Tunbridge Wells is **Broadwater Warren Nature Reserve**, in autumn when the ferns turn golden this is a wildlife paradise! From butterflies, rare birds to deer, or even a wild pony, wandering the paths, you are sure to spot some wildlife on your walk.

**Mobility
Scooters**

from
£799 *

Riser Recliners
from **£689***

Stairlifts Installed
from **£1,790***

Wheelchairs
from **£189***

Clearwell 
mobility
*Making Life
Easier*

Tunbridge Wells Showroom

26 Grosvenor Road
Tunbridge Wells
TN1 2AP

01892 544 933

Mon-Sat 9^{am}-5^{pm}

www.clearwellmobility.co.uk

*Prices quoted exclude VAT and are available to customers with a long term medical condition.

FREE Brochure

✂ Name

Address

Postcode

Post to: FREEPOST CLEARWELL MOBILITY

NEW!

ARUT

For more information
01892 864429

MG Care Homes

Quality nursing care in small family settings

www.mghomes.co.uk

Introducing the Economic Development Team



What does the Economic Development Team do?

We work to improve the economic wellbeing and quality of life of communities and businesses across the borough.

Here's some of the things we do:

Visit Tunbridge Wells

- The Cambridge Economic Impact Report for 2021 (which we commissioned) showed that there were **3.9m** visitors, **£191m** of economic activity, **4,505** jobs, and **39%** of people visited friends and relatives
- We produce and distribute **150,000** copies of the Visit Tunbridge Wells miniguide
- **339,000** visits to the VTW website in the last year
- Top countries visiting the VTW website:



Transport and Public Realm

- **£75,000** funding awarded from Active Travel England for local cycle and walking route designs

Business and Community Support

- **2,302** businesses contacted each month with our business newsletter
- **262** people attended our recruitment event in July, working with Job Centre Plus
- We have secured nearly **£1.5m** in funding for local projects through the Government's UK Shared Prosperity Fund
- The team has been in contact with approx. **1,600** borough businesses this year (through virtual and face to face meetings, networking and events)



The Economic Development team

Are you a local business?

Stay up to date!

- Sign up for our monthly business newsletter **tunbridgewells.gov.uk/business-portal**



- Follow us on social media **TWBC_Business**
- If you have questions about Council services visit our Business Portal or email us at **business@tunbridgewells.gov.uk** or call 01892 335538

Have your say!

We have prepared a new **Economic Development Strategy** for the borough and we would like feedback from businesses and residents on the document.

Please look out for information about this on the Council's consultation page, Talking Point.



twbc.online/consultations



Councillors we work closely with

CLlr Nancy Warne, *Cabinet Member for Communities (and Deputy Leader)*
CLlr Justine Rutland, *Cabinet Member for Economic Development*
CLlr Matthew Sankey, *Small Business Champion*
CLlr Peter Lidstone, *Walking and Cycling Champion*

We asked approximately 500 festival goers at Pub in the Park this year why they love Tunbridge Wells

Some highlights:

The Pantiles in summer-feels like I'm abroad

TW has a lot of fantastic small businesses and a great welcoming community

A great range of cultural and family-friendly activities

National Trust places nearby

Feel safe

Beautiful countryside



Take Some Time

Do you feel isolated? Would you like to make new friends?

Spend some time with objects from the museum looking, thinking and responding in a relaxed group.

Our 10-week course offers you the chance to spend time with objects from our collection and create arts and crafts in response to the objects.

If you live in the borough of Tunbridge Wells then you can join us to Take Some Time at the Amelia Scott.

The next course starts on

Wednesday 11 October from 1-2.30pm

For more details, or to sign up please contact

Daniel Huckfield

daniel.huckfield@tunbridgewells.gov.uk

01892 554146

The
Amelia 

**Over 17,000
people get our
weekly e-mail**

**Have you
signed
up yet?**



Get our latest news direct to your inbox, plus local events, regular items such as jobs, planning applications near you and bin updates.

It's so easy to sign up...

Visit [twbc.online/alerts](https://www.twbc.online/alerts)

The UK Shared Prosperity Fund



In 2022 the Council was allocated money from the UK Shared Prosperity Fund (UKSPF), as part of the Government's Levelling Up agenda. The Government set priorities for councils to use when deciding how the money should be spent in their communities.

When deciding how to spend the money locally, TWBC decided that a UKSPF Community Grants Programme should be created to support a range of smaller projects. We consulted with local community stakeholders in line with government guidance and invited applications from local projects that would benefit communities.

Earlier this year round 1 funding was awarded and just recently the round 2 awards have been made. As a result, across the borough, small projects have benefited from money from the UKSPF Community Grants Programme.

Round 1 projects

- Whitehorn Allotments, Brenchley
- Cranbrook in Bloom
- Horsmonden Sports Club Maintenance and Safety Appeal
- Lamberhurst Village Improvements
- Foal Hurst Wood Improvements, Paddock Wood
- Wildflower Meadow Improvements, Paddock Wood
- (PPC) War Memorial Cleaning, Pembury
- Speldhurst Biodiversity Project

Round 2 projects

- Creation of Benenden Allotments
- Capel Public Toilets
- Cranbrook Coronation Benches
- Lamberhurst Playground Resurfacing
- White's Corner Planting, Paddock Wood
- Public Footpath Signage, Pembury
- Rusthall All Ability Allotment Garden
- Southborough in Bloom



HOST FAMILIES REQUIRED

- Make your spare room work for you and earn an income from hosting European pupils on their school trips.
- We welcome schools throughout the year including summer stays. The groups arrive on a Monday and stay 3 or 4 nights. Their busy schedules mean they are out all day from 7.30am-7pm.
- Hosting suits everyone: singles, couples with or without children and retired people. We are seeking friendly and kind people who will provide the students with a warm, clean, safe and welcoming environment.
- Hosting with ISE is a wonderful and enriching way to give young people the opportunity of a lifetime and to create unforgettable memories.

TO FIND OUT MORE CONTACT

Stephanie Heymer

☎ 07555 548470 @ info@isegb.co.uk 🌐 isegb.co.uk

Award winning parks

It's always nice to receive good news and it was especially good to hear that the Council's parks and green spaces in Tunbridge Wells have retained their Green Flag Awards for another year.

Green Flags are held by:

Calverley Grounds

Dunorlan Park

Grosvenor & Hilbert Park

St John's Recreation Ground

The Grove

Woodbury Park Cemetery



The Green Flag accreditation - the international quality mark for parks and green spaces - is testament to the hard work and dedication of the volunteers, Friends groups, and the Council team that care for the green spaces so that everyone can enjoy them.

Dunorlan Park and Grosvenor & Hilbert Park also achieved the Green Heritage Site Accreditation, supported by Historic England, for the management of historic features.

Some events across the borough



Jazz on the Pantiles



**Thursday nights
7-10pm**

On the bandstand in the centre of The Pantiles,

If you haven't been this summer, there are a couple more chances. Last one for 2023 will be on 28 September.

visittunbridgewells.com



Harvest Festival Autumn Fair

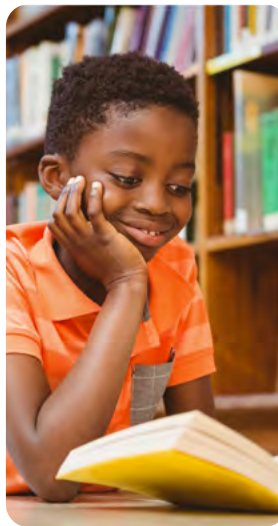


**Saturday 16
September - Sunday
17 September**

Water Lane, Hawkhurst,
TN18 5DH

Celebrate the harvest at Water Lane with market stalls selling crafts, vintage, ceramics, candles, and jewellery from independent lifestyle stores for home and gardens. Free entry on foot or bike. £5 per car to park.

visittunbridgewells.com



Cranbrook Literature Festival



**Friday 13 and
Saturday 14 October
from 12 noon - 10pm**

Vestry Hall, Cranbrook

Two days of events with author talks for adults and children, book signings, poetry, writing competitions and writing workshops. More details and bookings at cranbrookliteraturefestival.com



Southborough & High Brooms Neighbourhood Development Plan



**Monday 18
September, 7pm**

Southborough Civic Centre

The Neighbourhood Development Plan team is identifying local needs and issues.

Questionnaires for residents and business will be distributed at this first Community Workshop.



Bonfire night events



Sunday 5 November

If you love a bonfire and seeing the sparkle of fireworks safely, there'll be events being planned across the borough. Look out for details nearer the time and check your local town or parish council website. You can also check visittunbridgewells.com


CAMDEN CENTRE

Start something new at the Camden Centre this September

There's a new term feeling about September - why not capture that and join a class at the Camden Centre, Royal Tunbridge Wells?

Pilates	Soul Choir/Rock Choir	Dance	Keep fit and strength
Pole fitness	Wrestling	Martial arts	Yoga
And more, for young people and adults alike.			

The Camden Centre is also available for hire for private functions, corporate events, group meetings - contact the team to discuss your requirements.

twbc.online/camden

The Amelia Scott - a place for the whole community

It is now over a year since The Amelia Scott opened its doors in Royal Tunbridge Wells and results of a visitor survey show that

77%
rated the experience
overall as good
or very good



79%
felt it was a place
for the whole
community



Nearly a quarter of visitors are from outside the borough with some coming from as far afield as Australia and Denmark. Over 4,000 school children visited as part of planned school activities.

The Amelia Scott combines cultural and learning activities and access to Council services under one roof providing a much needed focal point in the centre of the town. Community events, cultural exhibitions and permanent displays are a source of education, entertainment and cultural exposure for visitors. Regular visitors will know how popular events like the twice-weekly

Baby Rhyme Time are; and the special exhibitions like Microworld, the summer reading challenge and artisan markets have all drawn new visitors to the centre.

During the financially challenging, cold winter months The Amelia Scott offers a warm welcoming space and in summer it has become the place for many young people to prepare and revise for exams.

The Amelia Scott is also benefiting the town more generally as many visitors go on to do other things nearby including shopping and visiting restaurants/café's.

A sustainable building

The rainwater harvesting tank beneath the buildings holds **15,000L**. The water collected is used for the toilets and for watering the planters in the courtyard garden.

In the first year the system saved 364,800L of water.

The solar panels on the roof of the building have generated **37,869kWh** of electricity - equal to powering 13 medium-size homes for a year, **saving over £12,000 on electricity and water.**

RK Jewellery Designs

WITH
SYMPATHETIC
RESTORATION



Your story lives on ...

Restoration is better than re-creation
For all that glitters, we offer salvation
Call Robert today for a free consultation.

07496 003 988

contact@rkjewellerydesigns.co.uk

www.rkjewellerydesigns.co.uk

TOWN COURT FARM, BAYHAM RD,
TN2 5HU

GAROLLA ★ PREMIUM
Increased Security • Double Insulation
One-Touch Close

PRICED EXAMPLE £1,990
PREMIUM • 3.4M • ANTHRACITE

FREE FITTING
PAYMENT ON INSTALLATION

PRICED EXAMPLE £2,740
PREMIUM • 5.1M • BLACK

PRICED EXAMPLE £895
COMPACT • UP TO 2.4M

Improve, Don't Move!

Maximise the value of your home.

- SPACE-SAVING - MAXIMISE YOUR GARAGE HEADROOM
- SECURITY-ENABLED AUTO-LOCKING SYSTEM
- CHOICE OF 21 COLOURS TO MATCH YOUR HOME
- REMOVAL AND RECYCLING OF YOUR OLD DOOR
- DEDICATED AFTER-CARE TEAM

GAROLLA
ROLLER
SHUTTER
DOORS

01892 640 120

LINES OPEN 7 DAYS A WEEK

www.garolla.co.uk

BESPOKE
ELECTRIC DOORS
MANUFACTURED
IN THE UK



Traffic reduces in centre of Royal Tunbridge Wells

The scheme to make the road in front of the War Memorial in Mount Pleasant Road, Royal Tunbridge Wells a more pleasant location in the centre of the town is taking effect.

Daily, the number of vehicles passing along the traffic-restricted road has reduced significantly in recent weeks. The result is a more

pedestrian and cycle-friendly part of town which was one of the original aims of the project when the work was completed back in 2019.

Less traffic also means improved air quality. The Council's Parking team continues to monitor the situation and live Penalty Charge Notices now go out to drivers seen infringing

the restriction, following an earlier campaign of warning notices. There is a sympathetic appeals system available online for drivers who wish to query a Penalty Charge.

Details of the restriction including maps can be seen at tunbridgewells.gov.uk/parking/bus-gatelane



Skate

TUNBRIDGE WELLS



Glide across the ice at SKATE

Ice skating returns to Calverley Grounds in Royal Tunbridge Wells for another season from Friday 1 December.

Alongside the main ice rink the smaller rink used by parents and toddlers by day will transform once again into the sell-out Bavarian curling rink by night.

Fantastic live music will be part of the weekly entertainment and the café and bar are the perfect place to enjoy some après-skate time!

The rink, which is just minutes from the train station, will be open every day except Christmas Day until Tuesday 2 January.

It's never too early to book your Skate tickets as sessions sell out quickly - especially the Bavarian curling. To book, or to find out more about special offers including school and group offers, go to

assemblyhalltheatre.co.uk/whats-on/skate-tunbridge-wells.html



Keeping the electoral register up to date

Annual canvassing is taking place

Every household in the borough will have received, or will soon receive, an initial form to check who is registered to vote. This will be by email if we hold your email address, or by post if we don't. Please respond following the instructions on the form.

If you respond when you receive the form, you will be helping us to reduce the costs of running the canvass. We also won't need to send a canvasser to visit your home. If you don't respond, our canvassers will be doing household door knocks from 9 October. All our canvassers will be wearing ID badges so you can easily identify them.

The Electoral Commission



Being on the electoral register means that you are ready to vote whenever an election is called. It can also have a positive impact on your credit score.

A canvass form is not a registration form, it is used to check that the information we hold is correct and to make us aware of anyone who may not be registered to vote. If you add anyone to this form, they should go online to register at gov.uk/register tovot e

Young people aged 16 and 17 can register to vote now. Registering means they won't miss out once they reach voting age.

More information about the annual canvass and voting is available at twbc.online/elections

Responding to the form online is the quickest and easiest way. Simply visit twbc.online/canvass

and click on the Start now button to complete your response. You will need your security codes and postcode from the form. Alternatively, you can scan the QR code and go straight to the response page.

If there are no changes to the form, you can also use our automated freephone service from a landline or mobile by calling 0800 197 9871.







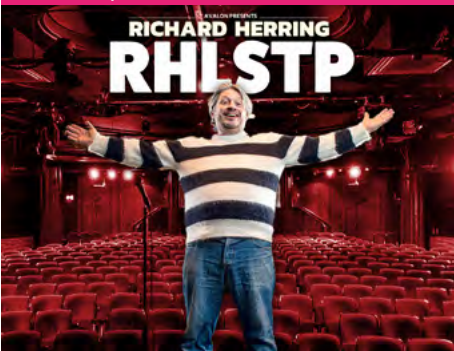



YOUR VOTE MATTERS
DON'T LOSE IT



ASSEMBLY HALL THEATRE AUTUMN SEASON

for full details and to book tickets visit our website
assemblyhalltheatre.co.uk
01892 530613

 <p>FIREMAN SAM LIVE! SAVES THE CIRCUS</p>	 <p>JIMMY CARR TERRIBLY FUNNY</p>
FAMILY SAT 16 SEP	COMEDY TUE 19 SEP
 <p>DO YOU BELIEVE IN GHOSTS? - A HAUNTING NIGHT OF THEATRE -</p>	 <p>SIR RANULPH FIENNES MAD, BAD AND DANGEROUS</p>
VARIETY SAT 23 SEP	SPOKEN WORD TUE 26 SEP
 <p>THINK FLOYD</p>	 <p>MUSSORGSKY TCHAIKOVSKY RACHMANINOFF Roderick Dunk Joo Yeon Sir</p>
MUSIC SAT 30 SEP	CLASSICAL SUN 1 OCT
 <p>RICHARD HERRING RHLSTP</p>	 <p>The Bootleg Beatles THE WORLD'S PREMIER BEATLE BAND 41st YEAR</p>
COMEDY FRI 6 OCT	MUSIC SAT 7 OCT
	MUSIC SUN 8 OCT



DANCE | TUE 10 OCT



VARIETY | WED 11 OCT



COMEDY | THU 12 OCT



COMEDY | SAT 14 – SUN 15 OCT



MUSIC | FRI 13 OCT



SPOKEN WORD | WED 18 OCT



MUSIC | THU 19 OCT



COMEDY | FRI 20 OCT



MUSIC | SAT 21 OCT



VARIETY | SUN 22 OCT



SPOKEN WORD | FRI 27 OCT



MUSIC | WED 1 NOV



MUSIC | THU 2 NOV



COMEDY | FRI 3 NOV



CLASSICAL | SUN 5 NOV



DANCE | WED 8 NOV



MUSIC | THU 9 NOV



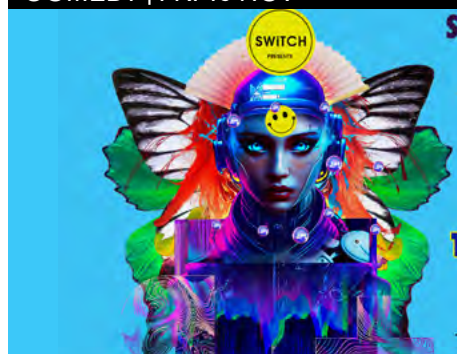
COMEDY | FRI 10 NOV



MUSIC | SAT 11 NOV



COMEDY | WED 15 NOV



DANCE | SAT 18 NOV



MUSIC | MON 20 NOV



COMEDY | TUE 21 NOV



MUSIC | WED 22 NOV

assemblyhalltheatre.co.uk
TUNBRIDGE WELLS



for full details and to book tickets visit our website

FROM CBBC'S
ANDY AND THE BAND
**STEWART
McCHEYNE**
as IDLE JACQUES

STARRING EASTENDERS'
**RITA
SIMONS**
AS THE ENCHANTRESS

BEAUTY AND THE BEAST

by Morgan Brind

ON SALE NOW

BACK BY POPULAR DEMAND
JAMES PEAKE
AS BETTY BON BON



SCAN ME



SAT 09 – SUN 31 DEC
assemblyhalltheatre.co.uk

f AssemblyHallTheatre x ahttw i AssemblyHallTheatre

Little
WOLF
entertainment

henrypaulfunerals.co.uk



HENRY PAUL FUNERALS

Contemporary and Traditional Services

A traditional family owned funeral directors dedicated to providing distinct levels of service, dignity and care.

Home Visits • Private Chapel of Rest • Full fleet of Modern & Vintage Vehicles • Floral Tributes • Catering • Memorial Masonry • Pre-paid Funeral Plans • Repatriation • 24 hour emergency service

HEAD OFFICE 10 High Steet, Pembury, Tunbridge Wells, Kent TN2 4NY 01892 825505 pembury@henrypaulfunerals.co.uk
FUNERAL DIRECTORS 50 - 52 Commercial Road, Paddock Wood, Kent TN12 6DP 01892 835955 paddockwood@henrypaulfunerals.co.uk
FUNERAL DIRECTORS AND MEMORIAL SHOWROOM 88a Shipbourne Road, Tonbridge, Kent TN10 3EG 01732 605002 tonbridge@henrypaulfunerals.co.uk



Spread the Cost of Your Treatment
Fixed monthly repayments provided through Chrysalis Finance with 0% APR representative*



Chelsfield Park Hospital
Part of Circle Health Group

Private Orthopaedic Surgery Near You

At Chelsfield Park Hospital, we offer a wide range of orthopaedic procedures to patients who live in Kent, Tunbridge Wells, Bromley, and Sevenoaks.

Why wait? Self-funding patients benefit from no waiting lists and fixed price packages, so there are no unexpected bills.

- Short waiting times, fast access to diagnosis and treatment
- Outstanding consultant lead treatment
- Consultation within 48hrs
- Imaging services including X-Ray, MRI, Ultrasound and CT
- Expertly tailored physiotherapy plans

For more information call 01689 885925

*Chrysalis Finance working in partnership with Circle Health Group. Loans are subject to status, terms, and conditions apply. Loans are arranged by Chrysalis Finance Limited of PO Box 404, Alderley Edge, Cheshire SK9 0EA. Both Circle Health Group and Chrysalis Finance Limited are authorised and regulated by the Financial Conduct Authority to carry out the regulated activity of credit broking. 0% APR is spread over 10 months.

26625 2498 MKT ADV / 04.2023

Sorry, no trick or treat



I will not open my door to you

Not everyone wants trick or treaters calling at their home, for some people it can be a worry to have callers after dark. You do not have to answer the door to them and you can make that clear by cutting out and displaying this poster in your window or door.

Wells Aldo Bespoke Range



We at Wells love JOHN SANKFY and are delighted to be their Premier stockist with the largest display of this gorgeous furniture. We have worked in collaboration to create unique models and fabric recipes from our vast fabric library to show off the beauty and quality of these stunning sofas and chairs in coordinated room sets which will fire the imagination!

Our fabric library includes many of the leading brands including:

Linwood, Sandersons, Romo, Designers Guild, Ralph Lauren, Morris & Co and many more.

The choice is amazing and we can tailor a unique item for you with the help of our in-house interior designer.

We look forward to welcoming you to our new showrooms.